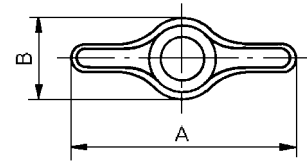
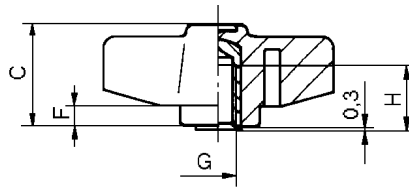


# Flügelmutter, Flügelschraube



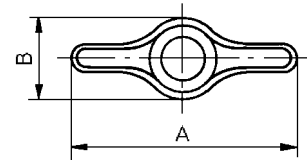
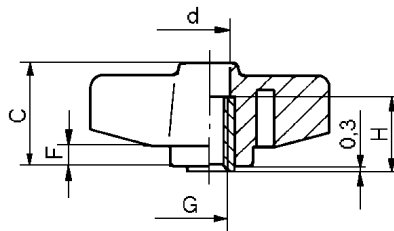
Werkstoff

Thermoplast



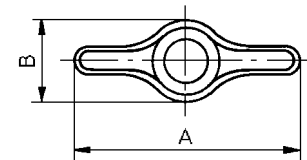
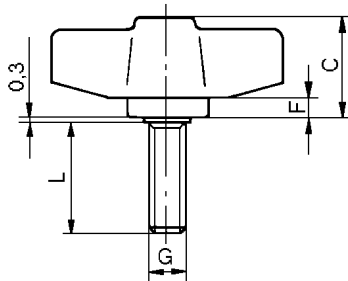
## Flügelmutter

Bestell-Nr.	Gewinde G	A	B	C	H	F	 g
T 34496	M 6	34	14	18	9	4	6
T 34497	M 8	48	17	20	13	4	10



## Flügelmutter-Gewindedurchloch

Bestell-Nr.	Gewinde G	A	B	C	d	H	F	 g
T 34498	M 6	34	14	18	7	15	4	8
T 34499	M 8	48	17	20	9	15	4	12



## Flügelschraube

Bestell-Nr.	Gewinde G	A	B	C	L	F	 g
T 34500	M 6 x 10	34	14	18	10	4	8
T 34501	M 6 x 15	34	14	18	15	4	9
T 34502	M 6 x 20	34	14	18	20	4	10
T 34503	M 6 x 25	34	14	18	25	4	11
T 34504	M 8 x 10	48	17	20	10	4	13
T 34505	M 8 x 15	48	17	20	15	4	15
T 34506	M 8 x 20	48	17	20	20	4	16
T 34507	M 8 x 25	48	17	20	25	4	18
T 34508	M 8 x 30	48	17	20	30	4	20
T 34509	M 8 x 35	48	17	20	35	4	22
T 34510	M 8 x 40	48	17	20	40	4	23

Bemaßungen, wenn nicht anders angegeben in Millimeter (mm).

### Werkstoff:

Griffkörper: Kunststoff-Thermoplast, schwarz

Gewindebuchse,-stift: Stahl verzinkt