



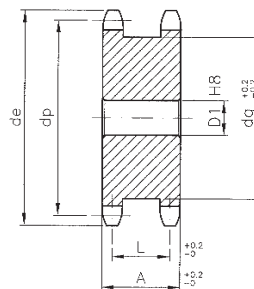
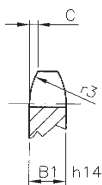
POWRÓT DO STRONY GŁÓWNEJ 

Koło łańcuchowe dla 2 jedn. łańcuchów

dla łańcucha rolkowego DIN 8187 / ISO R606

Material

Stal C 43



3/8" x 7/32" (06 B-1)

Kod	Ilość zębów z	D1	de	dp	dm	A	L
F 03178	13	10	43.5	39.80	29	23	17.8
F 03179	14	10	46.5	42.80	32	23	17.8
F 03180	15	10	49.5	45.81	35	23	17.8
F 03181	16	12	52.5	48.82	38	23	17.8
F 03182	17	12	55.5	51.83	41	23	17.8
F 03183	18	12	58.6	54.85	44	23	17.8
F 03184	19	12	61.6	57.87	47	23	17.8
F 03185	20	15	64.6	60.89	50	23	17.8
F 03186	21	15	67.6	63.91	53	23	17.8
F 03187	23	15	73.7	69.95	60	23	17.8
F 03188	25	15	79.7	76.00	66	23	17.8

1/2" x 5/16" (08B-1)

Kod	Ilość zębów z	D1	de	dp	dm	A	L
F 03189	12	15	53.9	49.07	36	30	23
F 03190	13	15	57.9	53.06	40	30	23
F 03191	14	15	61.9	57.07	44	30	23
F 03192	15	15	65.9	61.09	48	30	23
F 03193	16	15	69.9	65.10	52	30	23
F 03194	17	15	74.0	69.11	56	30	23
F 03195	18	15	78.0	73.14	60	30	23
F 03196	19	15	82.0	77.16	64	30	23
F 03197	20	15	86.0	81.19	68	30	23
F 03198	21	15	90.1	85.22	72	30	23
F 03199	23	15	98.1	93.27	80	30	23
F 03200	25	15	106.2	101.33	88	30	23

	B1	r3	C
06B-1	5.3	10	1.0
08B-1	7.2	13	1.3

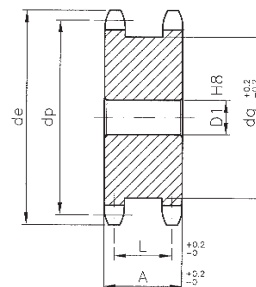
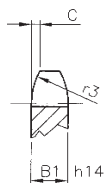
Rozmiary w mm.

Koło łańcuchowe dla 2 jedn. łańcuchów

dla łańcucha rolkowego DIN 8187 / ISO R606

Material

Stal C 43



5/8" x 3/8" (10B-1)

Kod	Ilość zębów z	D1	de	dp	dm	A	L
F 03201	12	15	68.2	61.34	45	34	25.2
F 03202	13	15	73.2	66.32	50	34	25.2
F 03203	14	15	78.2	71.34	55	34	25.2
F 03204	15	15	83.2	76.36	60	34	25.2
F 03205	16	15	88.3	81.37	65	34	25.2
F 03206	17	15	93.3	86.39	70	34	25.2
F 03207	18	15	98.3	91.42	75	34	25.2
F 03208	19	20	103.3	96.45	80	34	25.2
F 03209	20	20	108.4	101.49	85	34	25.2
F 03210	21	20	113.4	106.52	90	34	25.2
F 03211	23	20	123.5	116.58	100	34	25.2
F 03212	25	20	133.6	126.66	110	34	25.2

3/4" x 7/16" (12B-1)

Kod	Ilość zębów z	D1	de	dp	dm	A	L
F 03213	12	20	81.8	73.6	53	44	33.4
F 03214	13	20	87.8	79.59	59	44	33.4
F 03215	14	20	93.8	85.61	65	44	33.4
F 03216	15	20	99.8	91.63	71	44	33.4
F 03217	16	20	105.8	97.65	77	44	33.4
F 03218	17	20	111.9	103.67	83	44	33.4
F 03219	18	20	117.9	109.71	89	44	33.4
F 03220	19	20	123.9	115.75	95	44	33.4
F 03221	20	20	130	121.78	101	44	33.4
F 03222	21	25	136	127.82	107	44	33.4
F 03223	23	25	148.1	139.9	119	44	33.4
F 03224	25	25	160.2	152	131	44	33.4

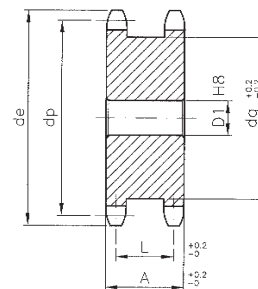
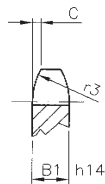
	B1	r3	C
10B-1	9.1	16	1.6
12B-1	11.1	19	2.0

Rozmiary w mm.

Koło łańcuchowe dla 2 jedn. łańcuchów dla łańcucha rolkowego DIN 8187 / ISO R606

Material

Stal C 43



1" x 17,02" (16B-1)

Kod	Ilość zębów z	D1	de	dp	dm	A	L
F 03225	12	20	109.7	98.14	72	68	52.5
F 03226	13	20	117.7	106.12	80	68	52.5
F 03227	14	20	125.7	114.15	88	68	52.5
F 03228	15	20	133.7	122.17	96	68	52.5
F 03229	16	25	141.8	130.20	104	68	52.5
F 03230	17	25	149.8	138.22	112	68	52.5
F 03231	18	25	157.8	146.28	120	68	52.5
F 03232	19	30	165.9	154.33	128	68	52.5
F 03233	21	30	182.0	170.43	144	68	52.5

	B1	r3	C
16B-1	16.2	26	2.5

Rozmiary w mm.